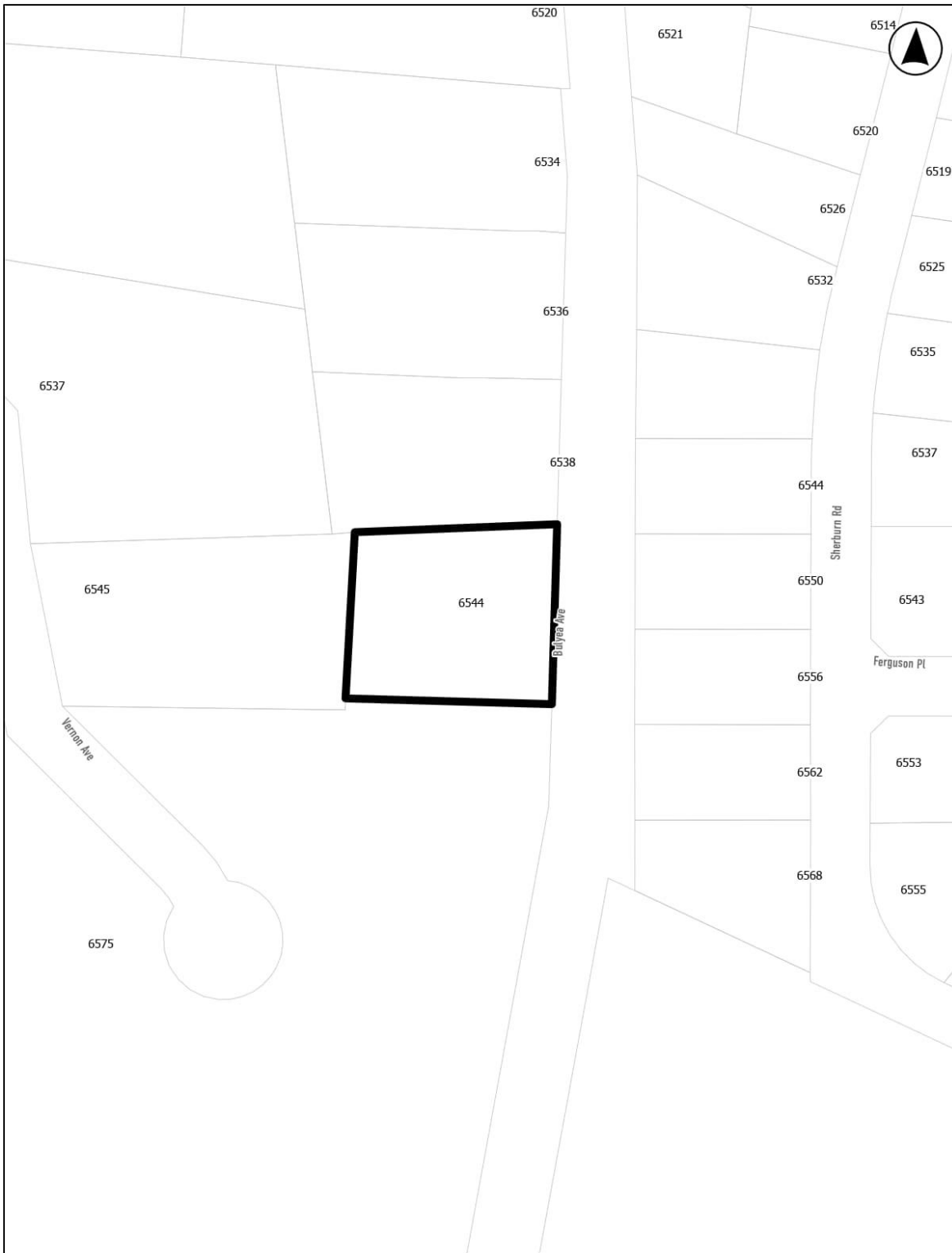


Schedule “D” to Amendment Bylaw No. 2422, 2024
Page 1 of 4



Bylaw No. 2422 Schedule D (RR1 to R1).docx

From: RR1 – Rural Residential
To: R1 – Low Density Residential

Schedule “D” to Amendment Bylaw No. 2422, 2024
Page 2 of 4



Bylaw No. 2422 Schedule D (RR1 to R1).docx

From: RR1 – Rural Residential
To: R1 – Low Density Residential

Schedule “D” to Amendment Bylaw No. 2422, 2024
Page 3 of 4



From: RR1 – Rural Residential
To: R1 – Low Density Residential

Schedule “D” to Amendment Bylaw No. 2422, 2024
Page 4 of 4



From: RR1 – Rural Residential
To: R1 – Low Density Residential