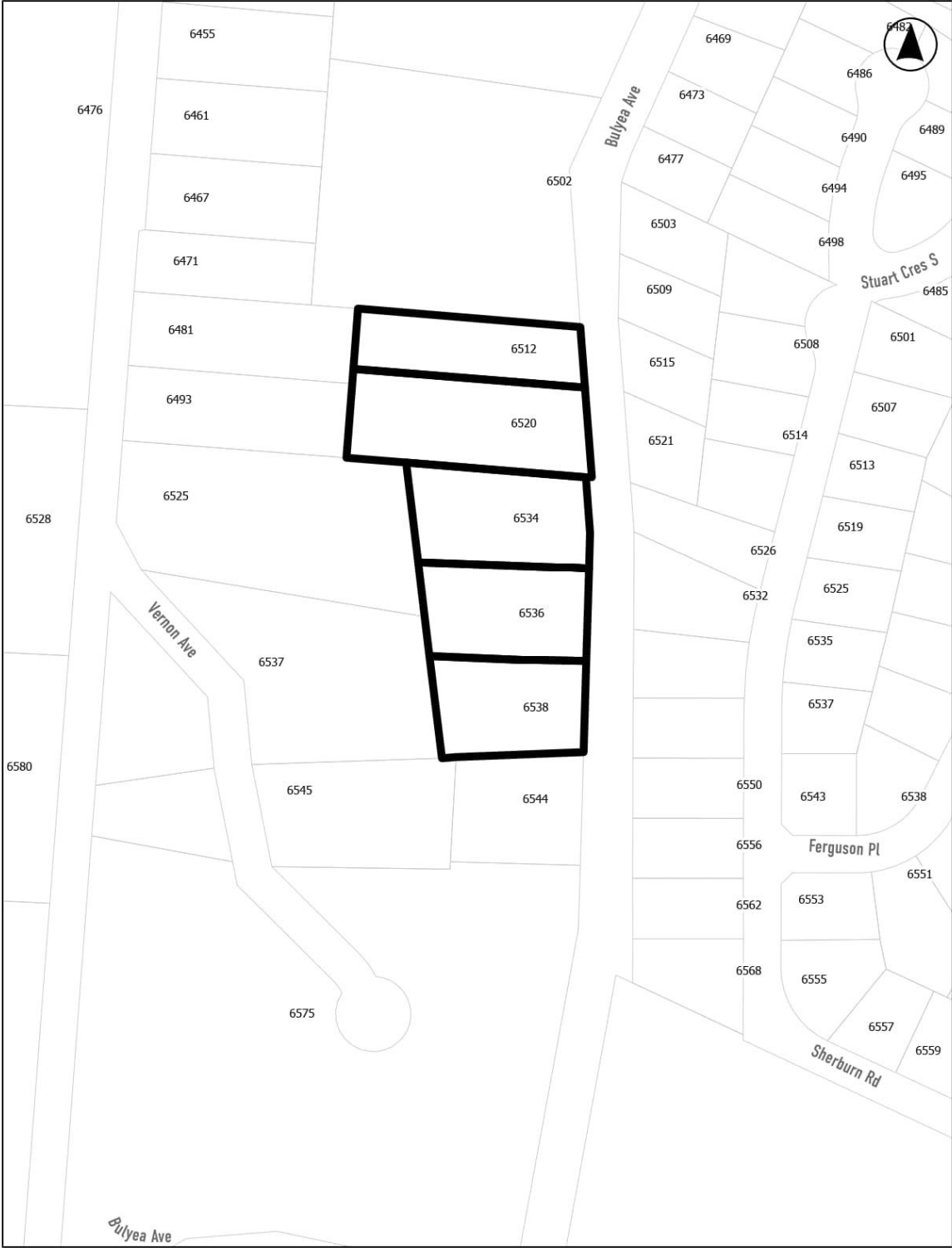


Schedule "E" to Amendment Bylaw No. 2422, 2024
Page 1 of 4



C:\Program Files\esCRIBE\TEMP\11464379253\11464379253,,,Amendment
Bylaw No. 2422 Schedule E (RR2 to R1).docx

From: RR2 – Country Residential
To: R1 – Low Density Residential

Schedule "E" to Amendment Bylaw No. 2422, 2024
Page 2 of 4



C:\Program Files\esCRIBE\TEMP\11464379253\11464379253,,,Amendment
Bylaw No. 2422 Schedule E (RR2 to R1).docx

From: RR2 – Country Residential
To: R1 – Low Density Residential

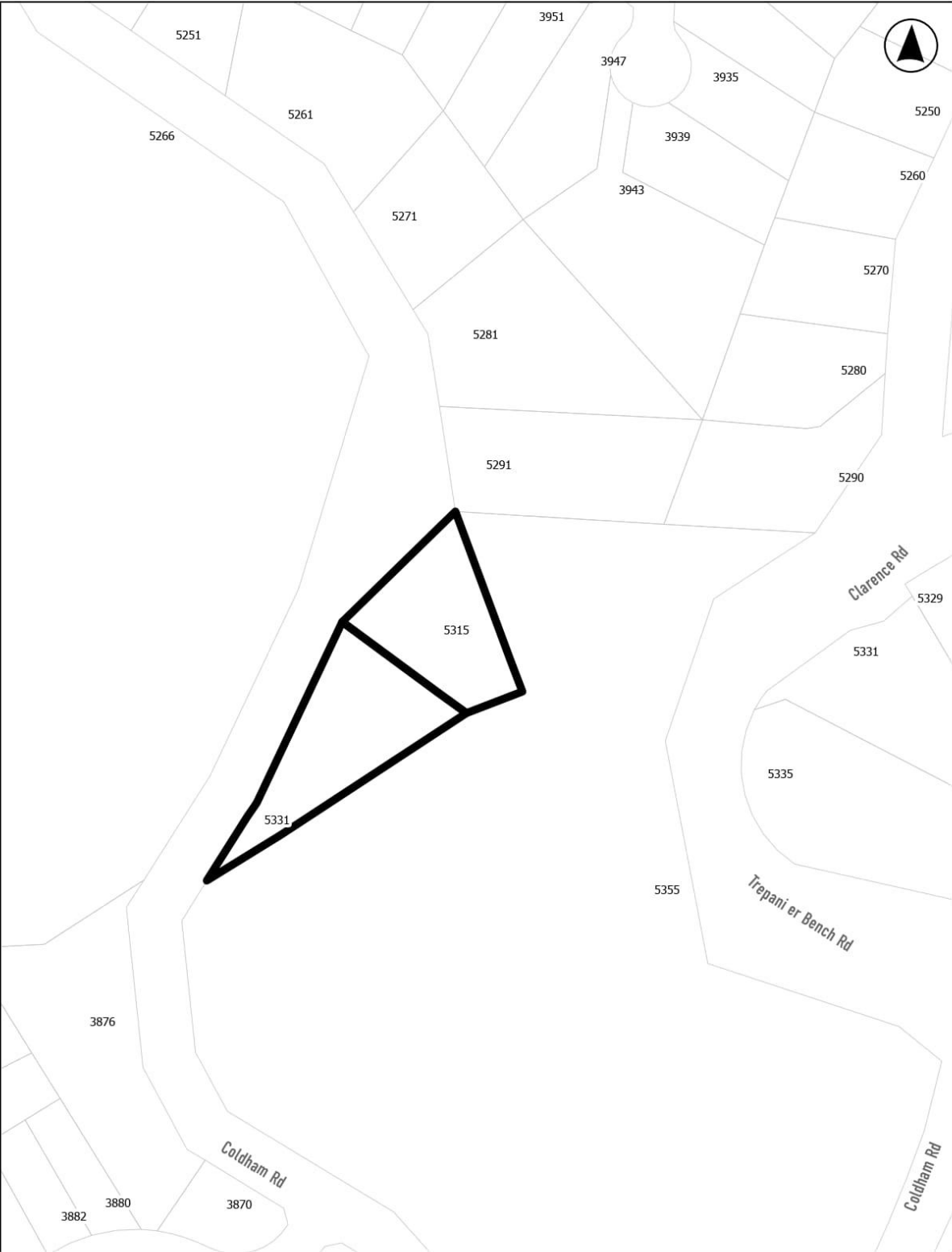
Schedule "E" to Amendment Bylaw No. 2422, 2024
Page 3 of 4



C:\Program Files\ESCRIBE\TEMP\11464379253\11464379253,,,Amendment
Bylaw No. 2422 Schedule E (RR2 to R1).docx

From: RR2 – Country Residential
To: R1 – Low Density Residential

Schedule "E" to Amendment Bylaw No. 2422, 2024
Page 4 of 4



U:\Program Files\Microsoft\Office\11\1470719200\11470719200,,,Amendment
Bylaw No. 2422 Schedule E (RR2 to R1).docx

From: RR2 – Country Residential
To: R1 – Low Density Residential