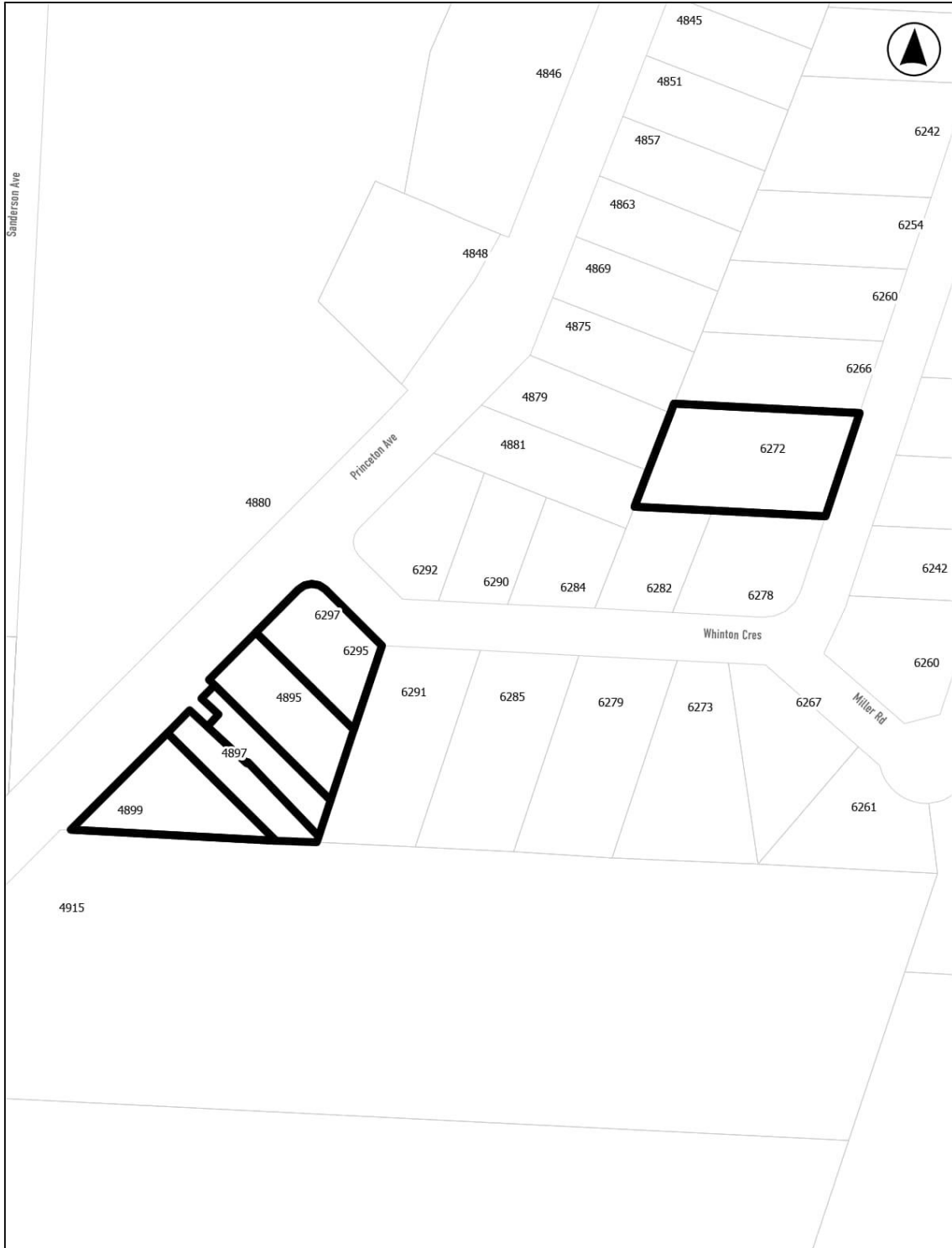


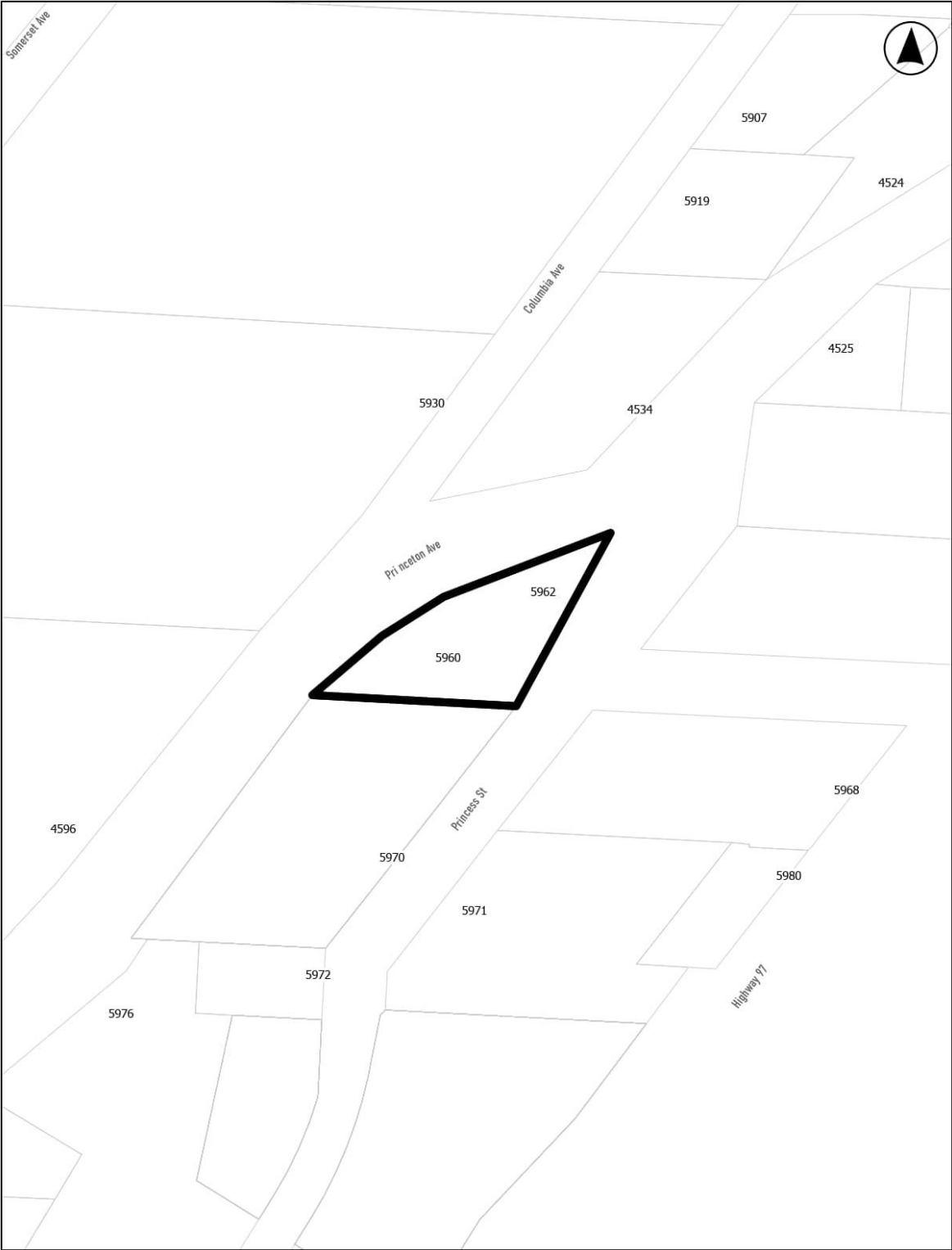
Schedule "C" to Amendment Bylaw No. 2422, 2024
Page 1 of 8



Bylaw Schedule C (R2 to R1) (With additional maps)_2024-06-25.docx

From: R2 – Two Unit Residential
To: R1 – Low Density Residential

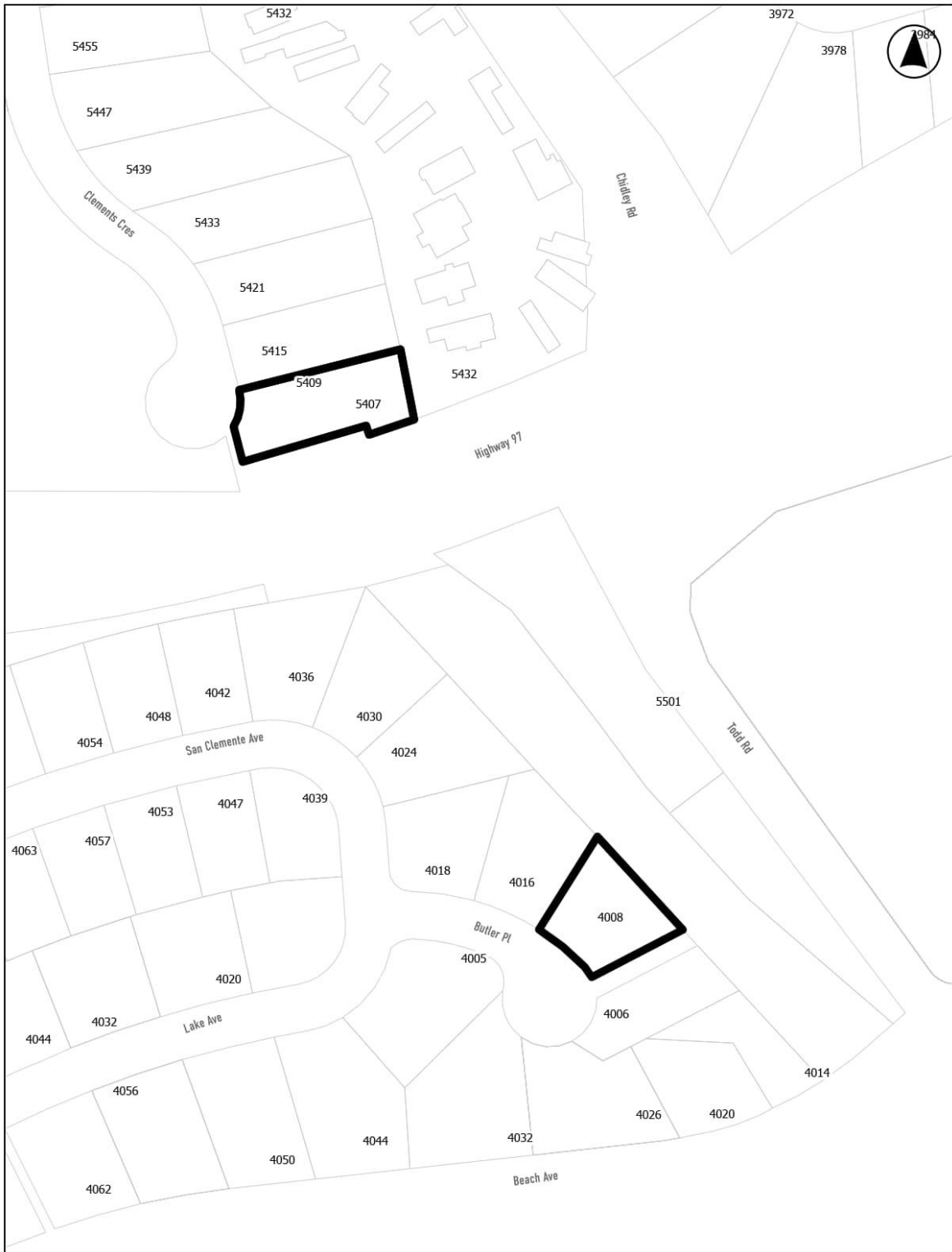
Schedule "C" to Amendment Bylaw No. 2422, 2024
Page 2 of 8



25.docx

From: R2 – Two Unit Residential
To: R1 – Low Density Residential

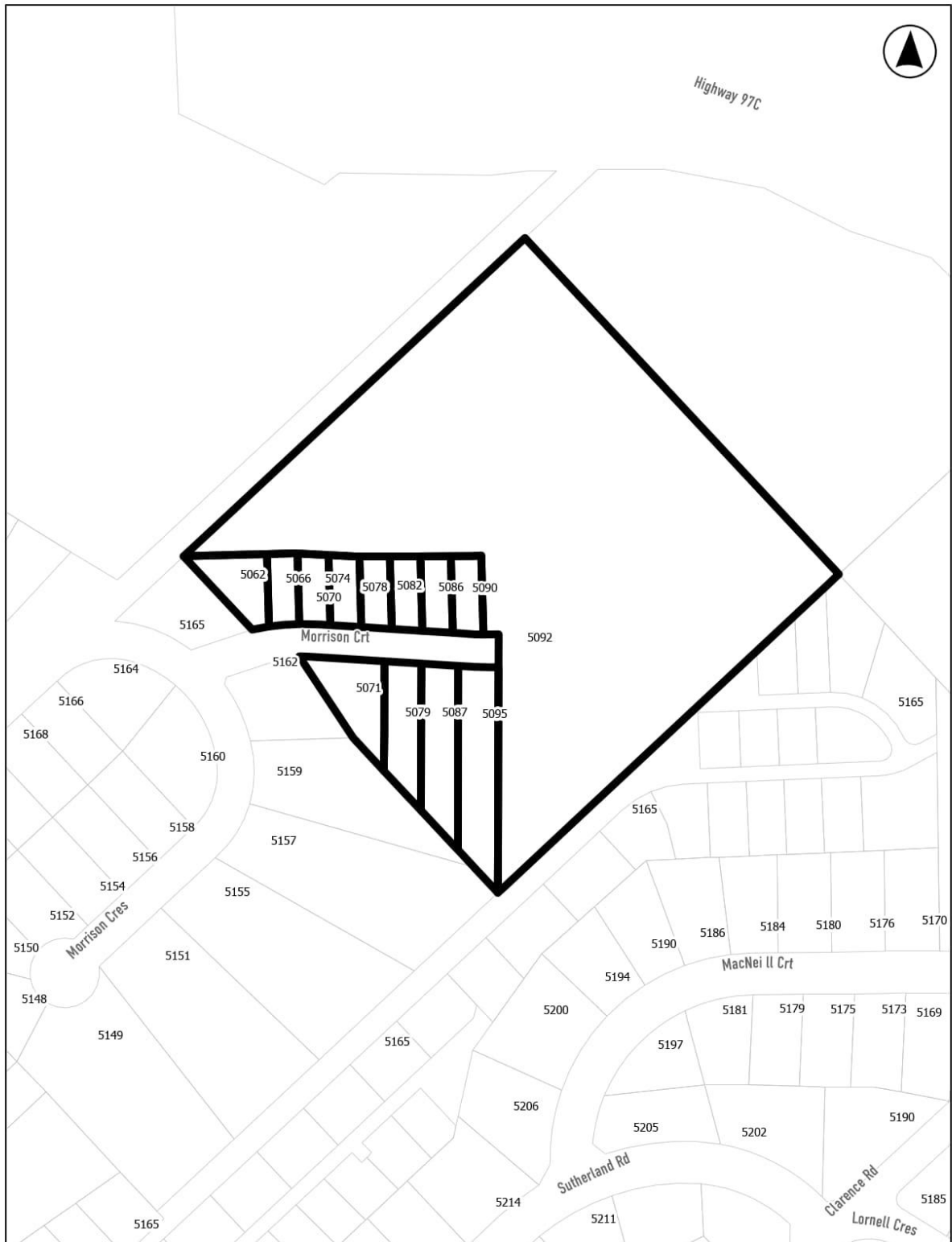
Schedule "C" to Amendment Bylaw No. 2422, 2024
Page 3 of 8



25.docx

From: R2 – Two Unit Residential
To: R1 – Low Density Residential

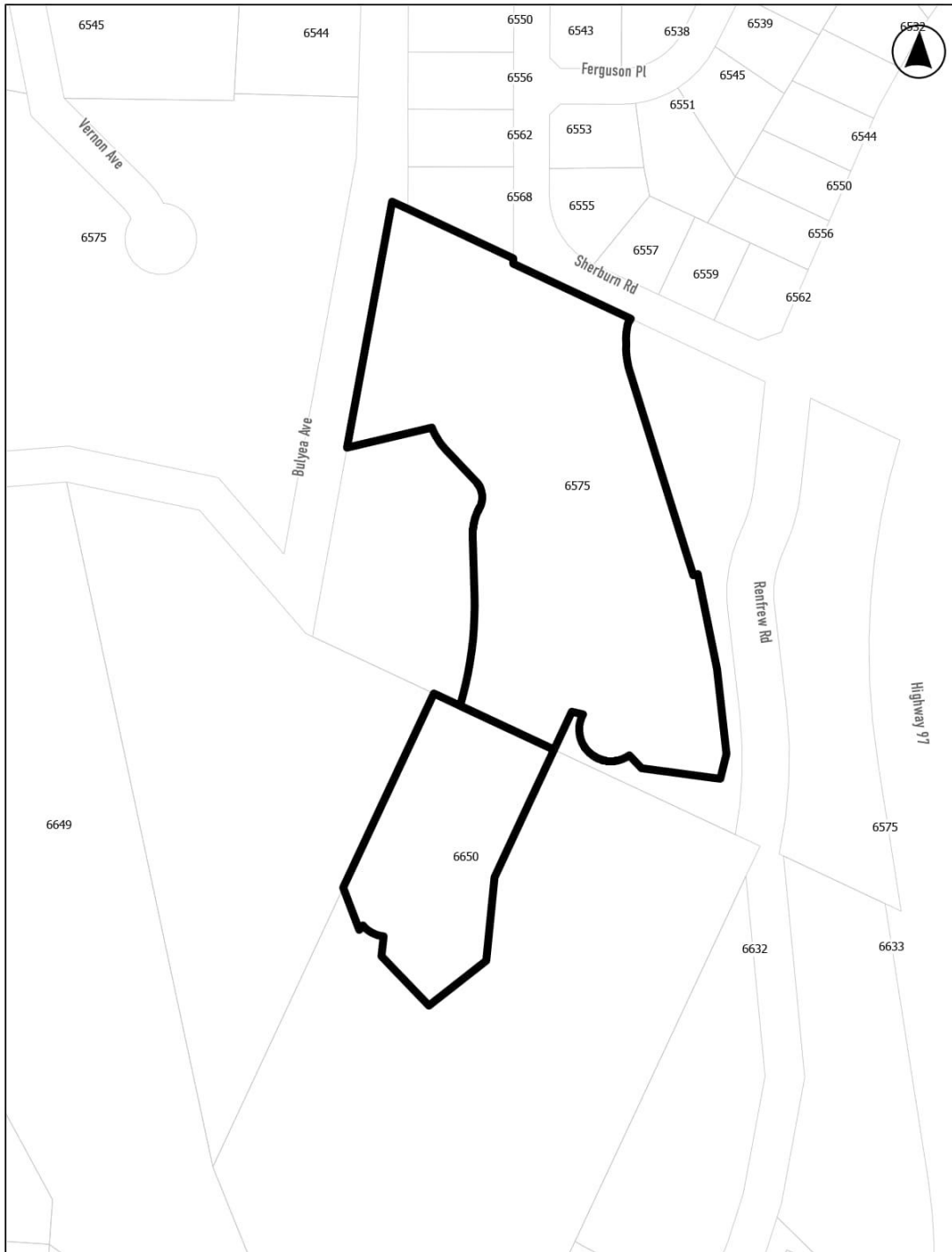
Schedule "C" to Amendment Bylaw No. 2422, 2024
Page 4 of 8



25.docx

From: R2 – Two Unit Residential
To: R1 – Low Density Residential

Schedule "C" to Amendment Bylaw No. 2422, 2024
Page 5 of 8



C:\Program Files\leSCRIBE\TEMP\11464235380\11464235380,,,Amendment
Bylaw Schedule C (R2 to R1) (With additional maps)_2024-06-
25.docx

From: R2 – Two Unit Residential
To: R1 – Low Density Residential

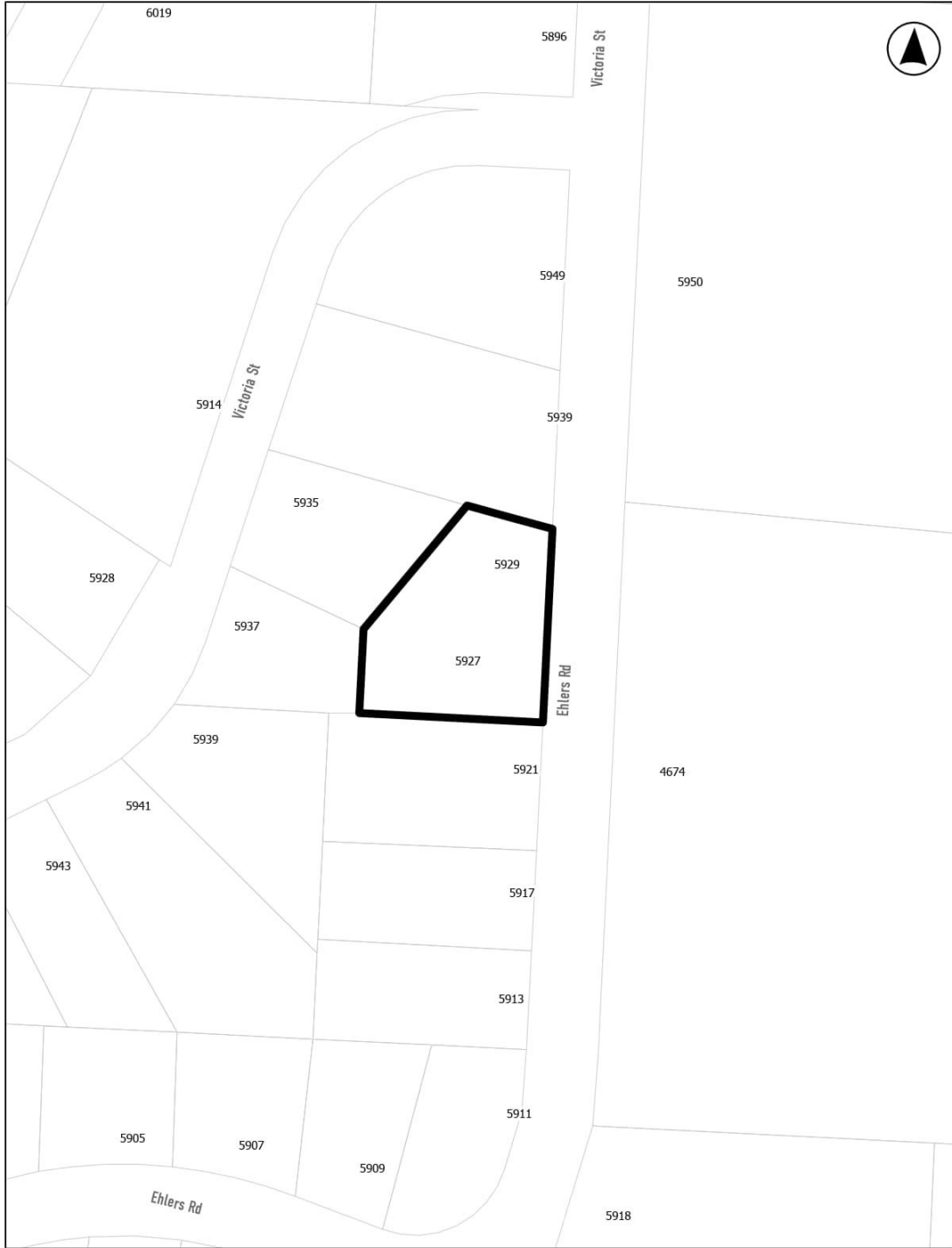
Bylaw Number 2422, 2024

Schedule “C” to Amendment Bylaw No. 2422, 2024
Page 6 of 8

*C:\Program Files\eSCRIBE\TEMP\11464235380\11464235380,,,Amendment
Bylaw Schedule C (R2 to R1) (With additional maps)_2024-06-
25.docx*

From: R2 – Two Unit Residential
To: R1 – Low Density Residential

Schedule "C" to Amendment Bylaw No. 2422, 2024
Page 7 of 8



C:\Program Files\SCRIBE\TEMP\11464235380\11464235380,,,Amendment
Bylaw Schedule C (R2 to R1) (With additional maps)_2024-06-
25.docx

From: R2 – Two Unit Residential
To: R1 – Low Density Residential

Bylaw Number 2422, 2024

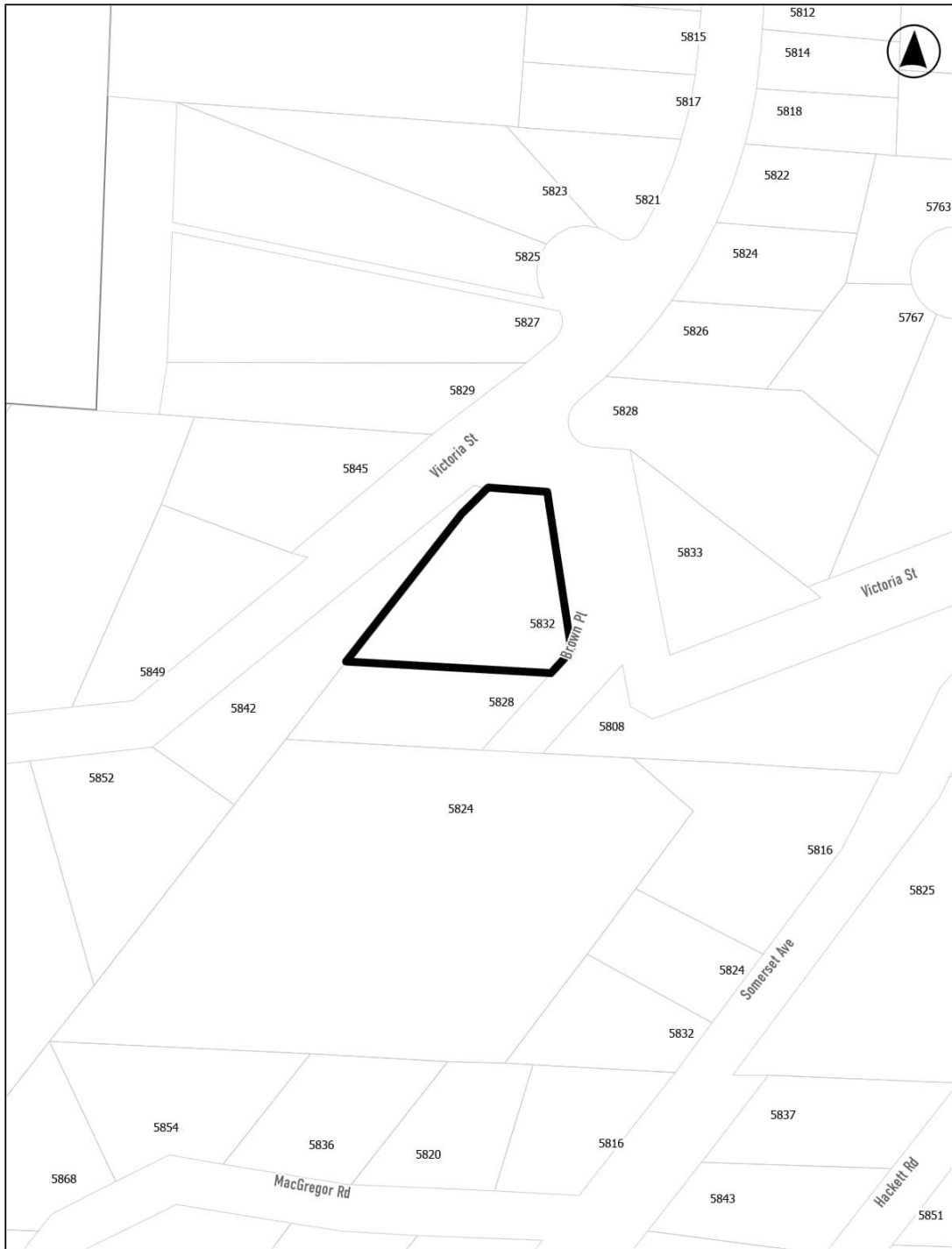
Schedule “C” to Amendment Bylaw No. 2422, 2024

Page 8 of 8

*C:\Program Files\eSCRIBE\TEMP\11464235380\11464235380,,,Amendment
Bylaw Schedule C (R2 to R1) (With additional maps)_2024-06-
25.docx*

From: R2 – Two Unit Residential
To: R1 – Low Density Residential

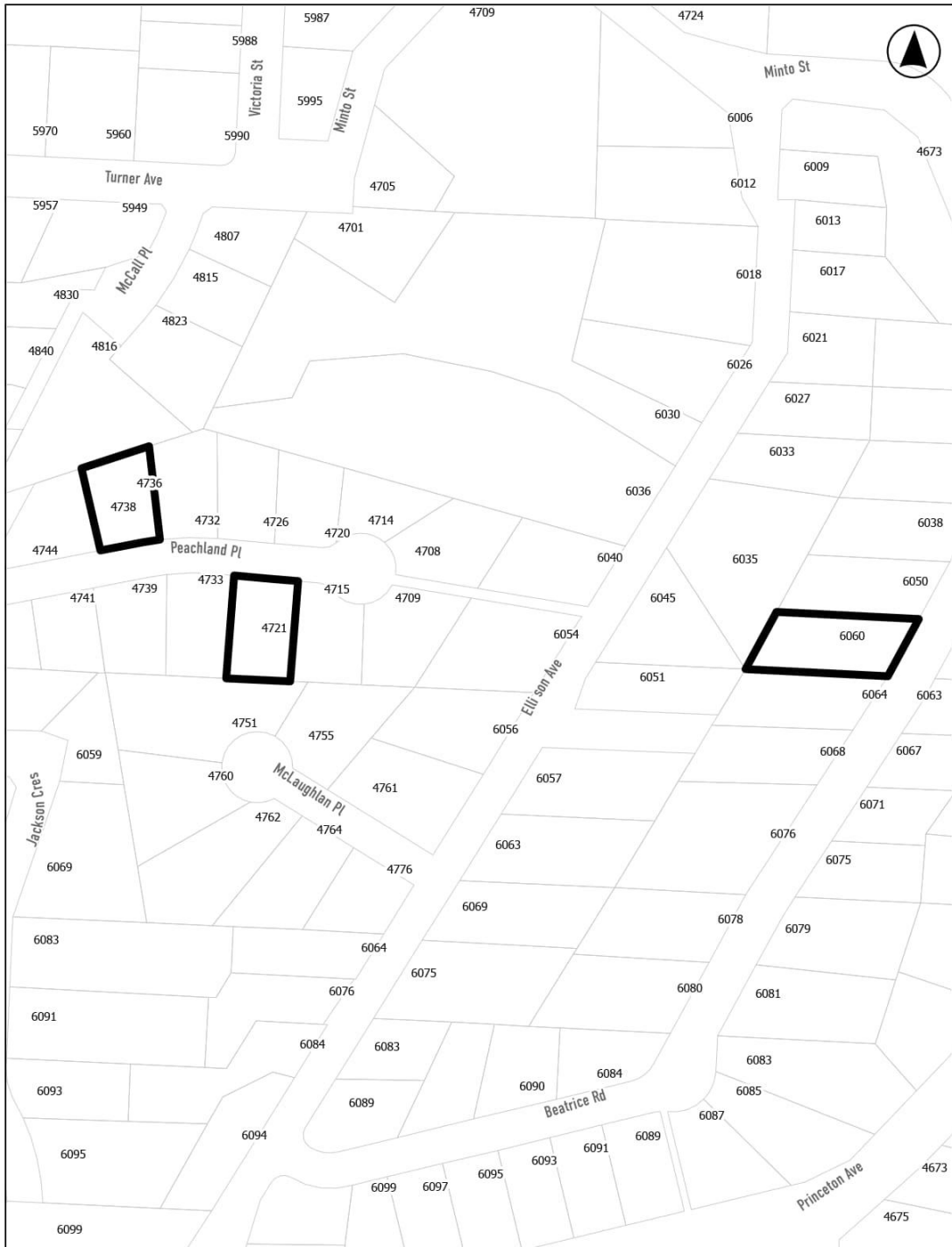
Schedule "C" to Amendment Bylaw No. 2422, 2024
Page 9 of 8



C:\Program Files\SCRIBE\TEMP\11464235380\11464235380,,,Amendment
Bylaw Schedule C (R2 to R1) (With additional maps)_2024-06-
25.docx

From: R2 – Two Unit Residential
To: R1 – Low Density Residential

Schedule "C" to Amendment Bylaw No. 2422, 2024
Page 10 of 8



C:\Program Files\SCRIBE\TEMP\11464235380\11464235380,,,Amendment
Bylaw Schedule C (R2 to R1) (With additional maps)_2024-06-
25.docx

From: R2 – Two Unit Residential
To: R1 – Low Density Residential

Bylaw Number 2422, 2024

Schedule “C” to Amendment Bylaw No. 2422, 2024
Page 11 of 8

*C:\Program Files\eSCRIBE\TEMP\11464235380\11464235380,,,Amendment
Bylaw Schedule C (R2 to R1) (With additional maps)_2024-06-
25.docx*

From: R2 – Two Unit Residential
To: R1 – Low Density Residential